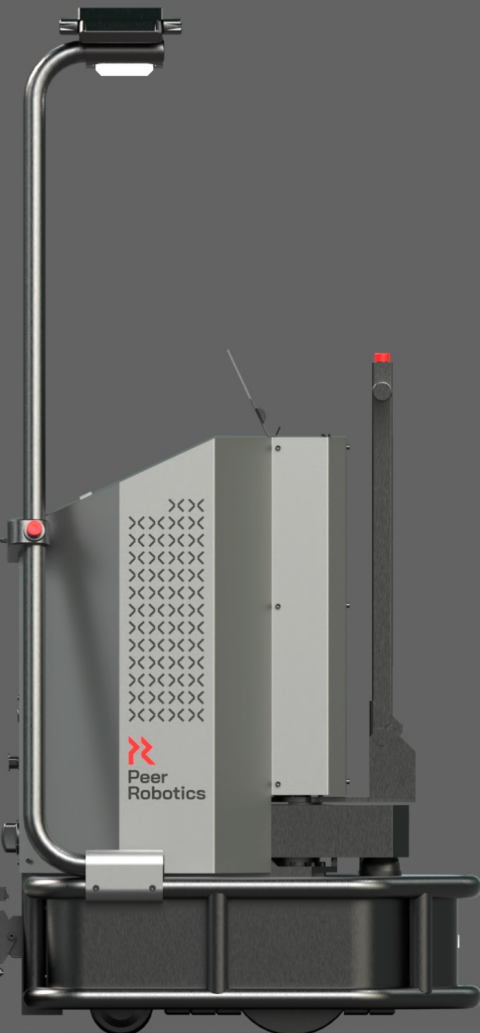


Designed to Work with Humans





Peer 3000



Payload Capacity of up to 3000lbs

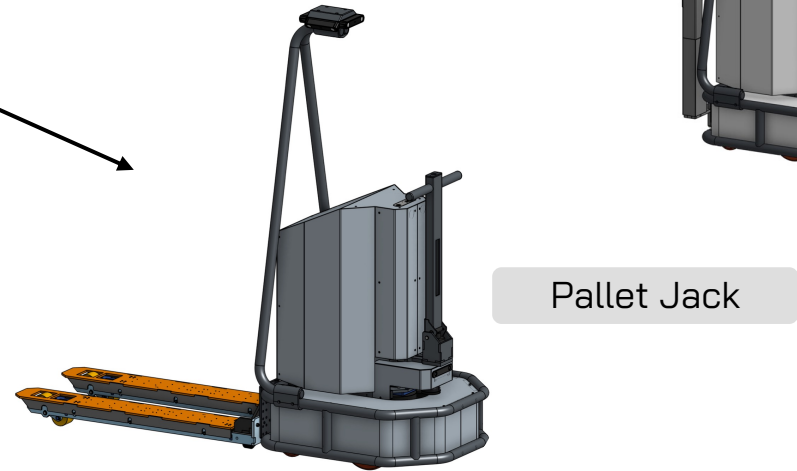
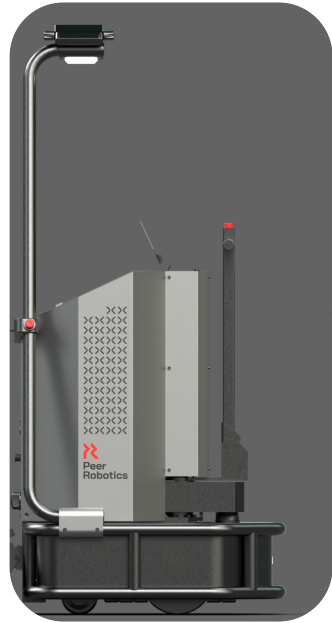
Native Vision Stack for enhanced context & safety

Modular Hardware to handle range of trolleys and pallets

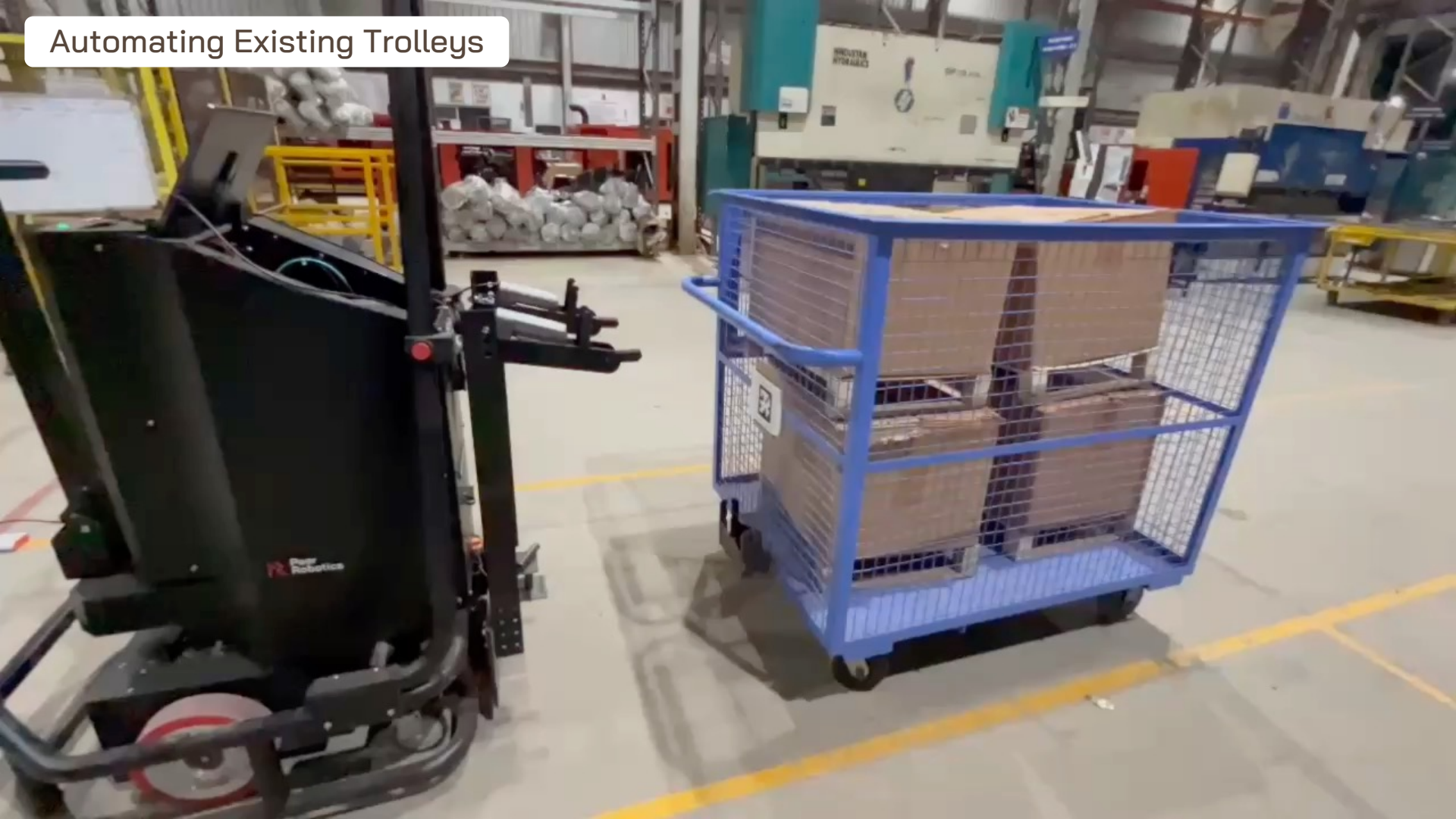
Extensive Sensor Suite to ensure safety & Expanding Applications



Modular Hardware for Custom Attachments



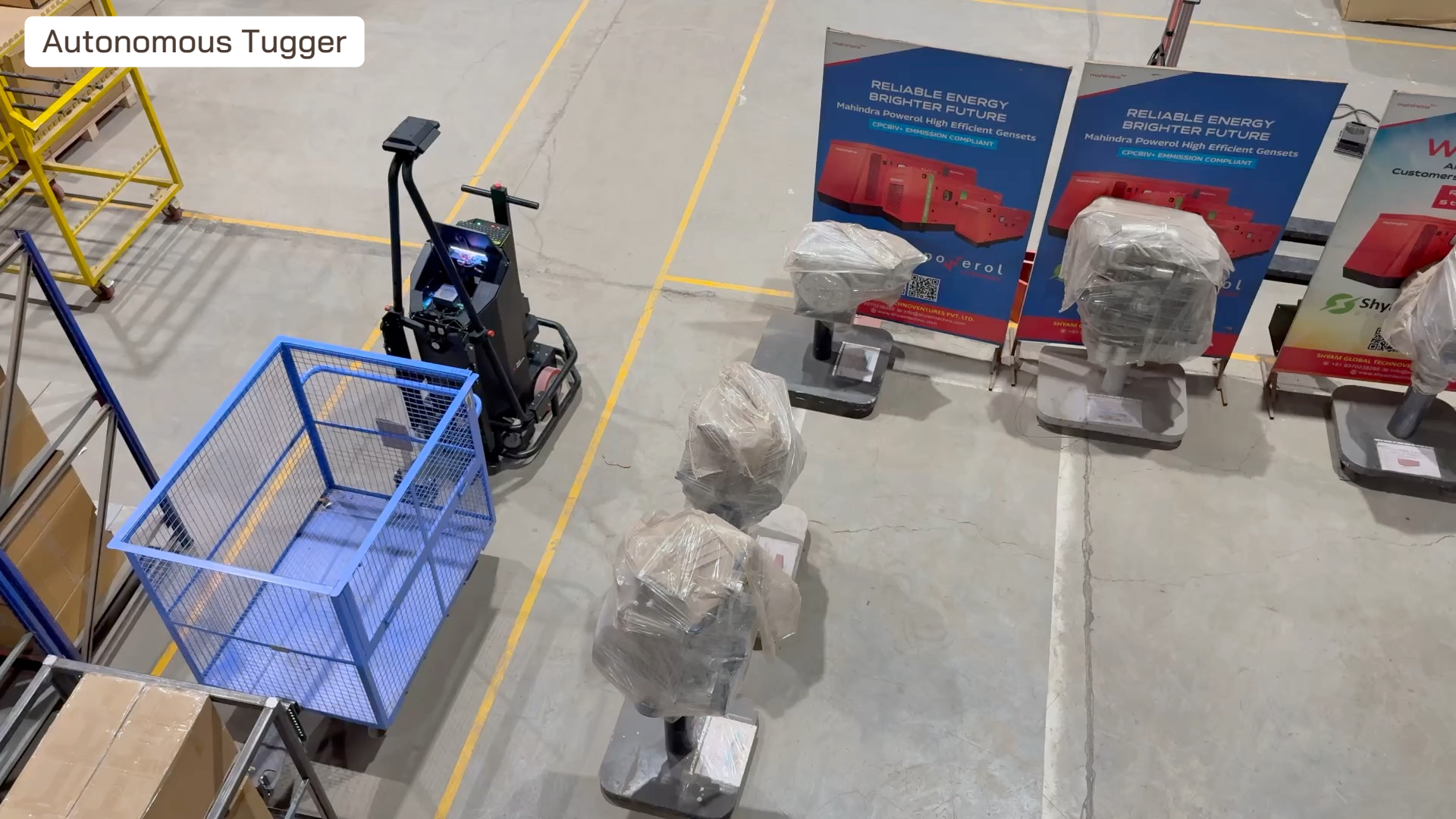
Automating Existing Trolleys



Assisted Picking Application



Autonomous Tugger



RELIABLE ENERGY
BRIGHTER FUTURE
Mahindra Powerol High Efficient Gensets
CPCBIV+ EMISSION COMPLIANT

RELIABLE ENERGY
BRIGHTER FUTURE
Mahindra Powerol High Efficient Gensets
CPCBIV+ EMISSION COMPLIANT

RELIABLE ENERGY
BRIGHTER FUTURE
Mahindra Powerol High Efficient Gensets
CPCBIV+ EMISSION COMPLIANT

powerol

powerol

powerol

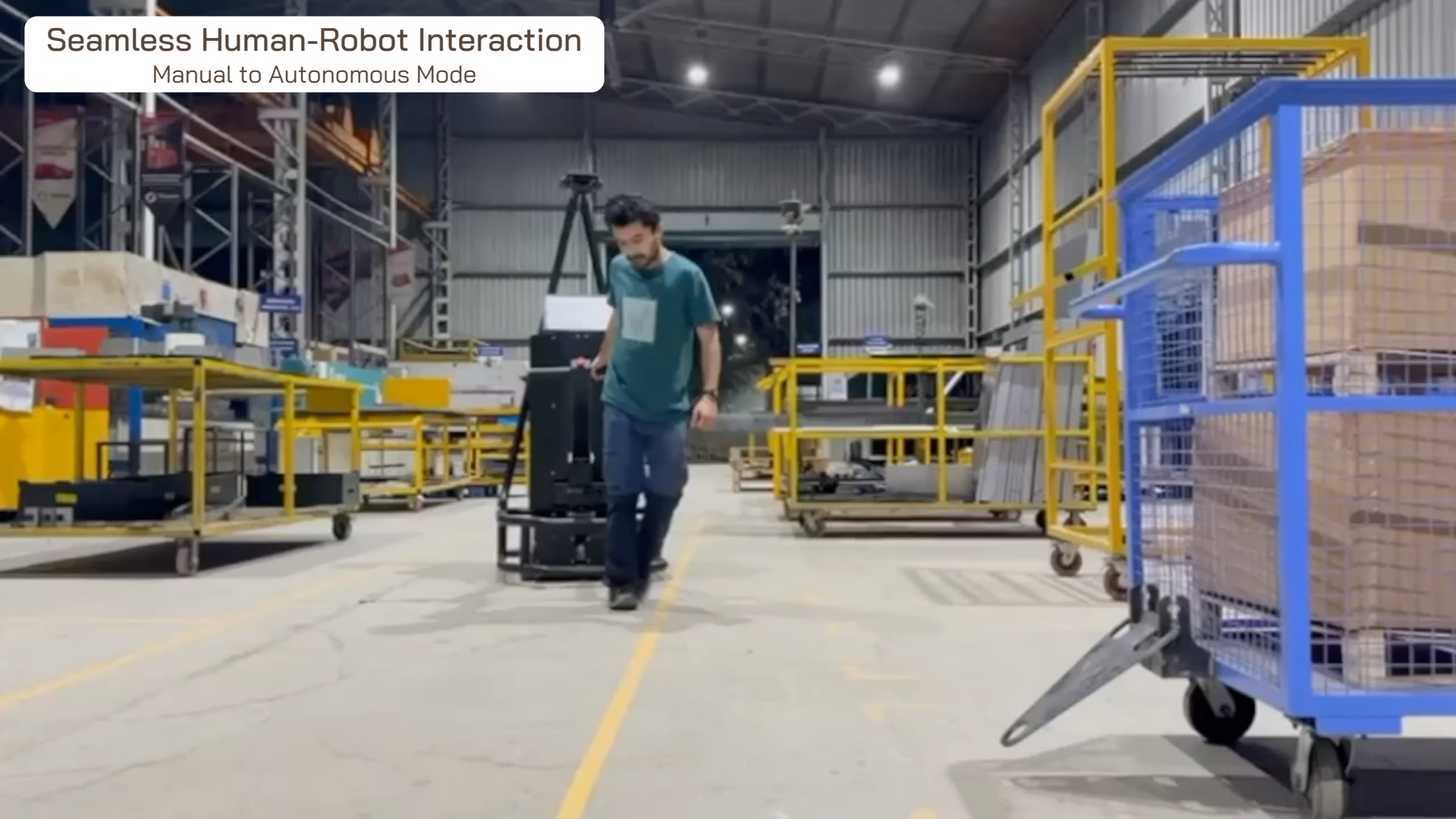
MAHINDRA POWEROL PRIVATE LIMITED
www.mahindrapowerol.com

SHYAM

SHYAM GLOBAL TECHNOLOGIES
www.shyamglobal.com

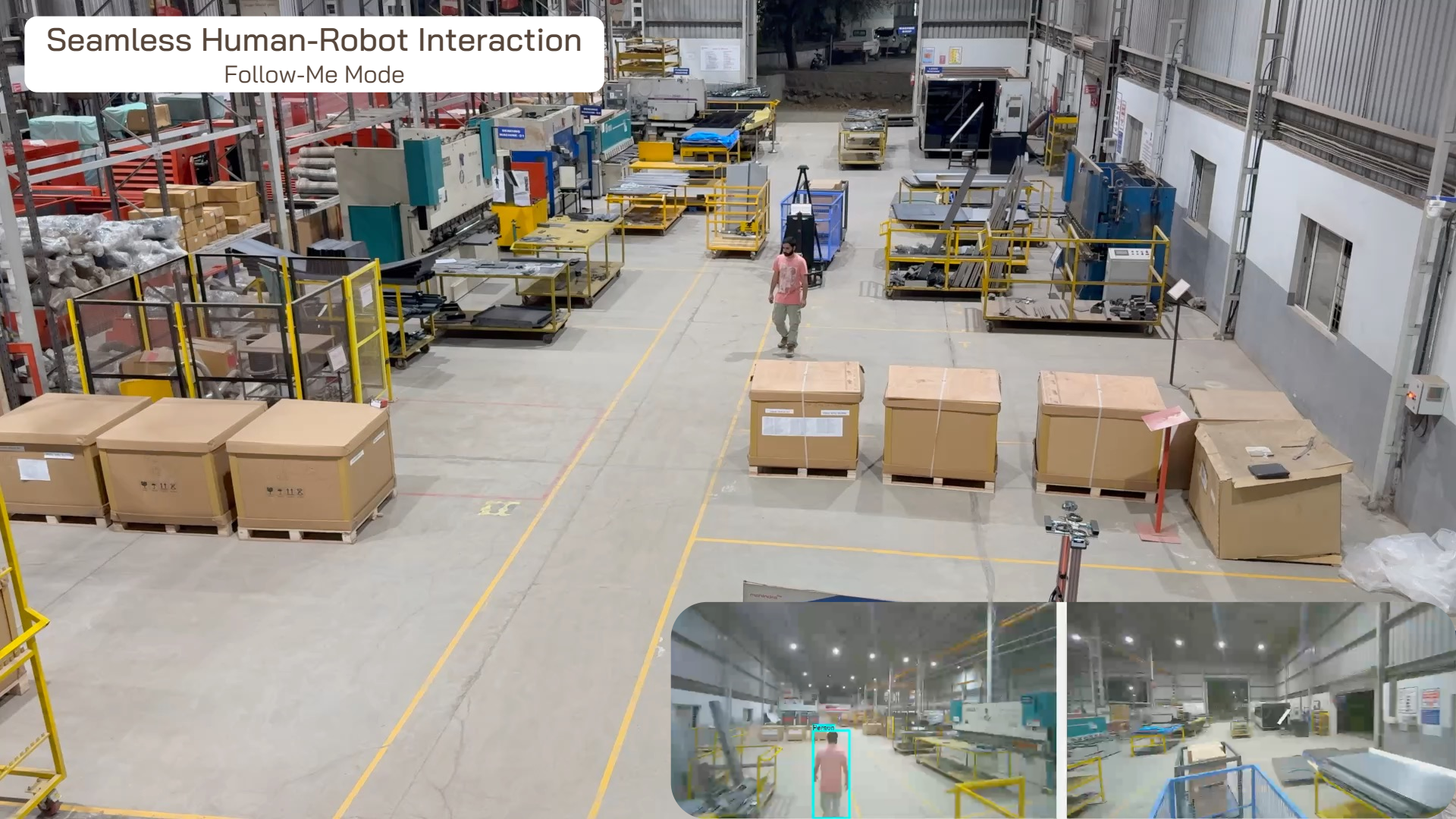
Seamless Human-Robot Interaction

Manual to Autonomous Mode

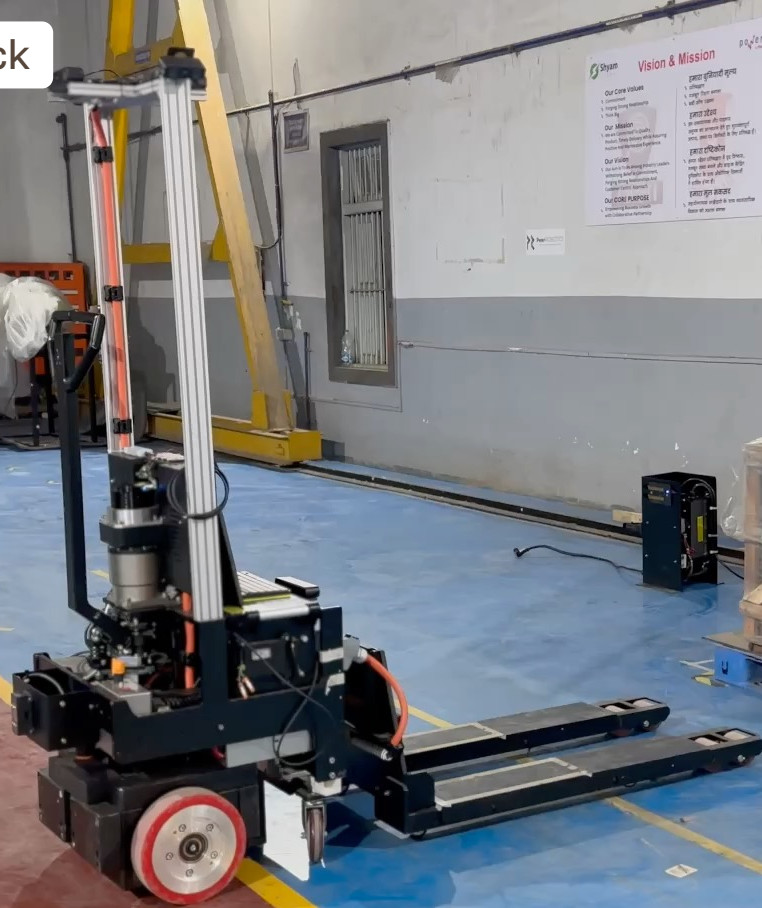


Seamless Human-Robot Interaction

Follow-Me Mode



Autonomous Pallet Jack



Shyam **prajwal**

Vision & Mission

Our Core Values

- 1. Customer
- 2. Strong Work Ethic
- 3. Teamwork

Our Mission

Let us be the leading provider of solutions in the field of automation, robotics, and artificial intelligence.

Our Vision

To be the leading provider of solutions in the field of automation, robotics, and artificial intelligence.

Our Core Purpose

To be the leading provider of solutions in the field of automation, robotics, and artificial intelligence.

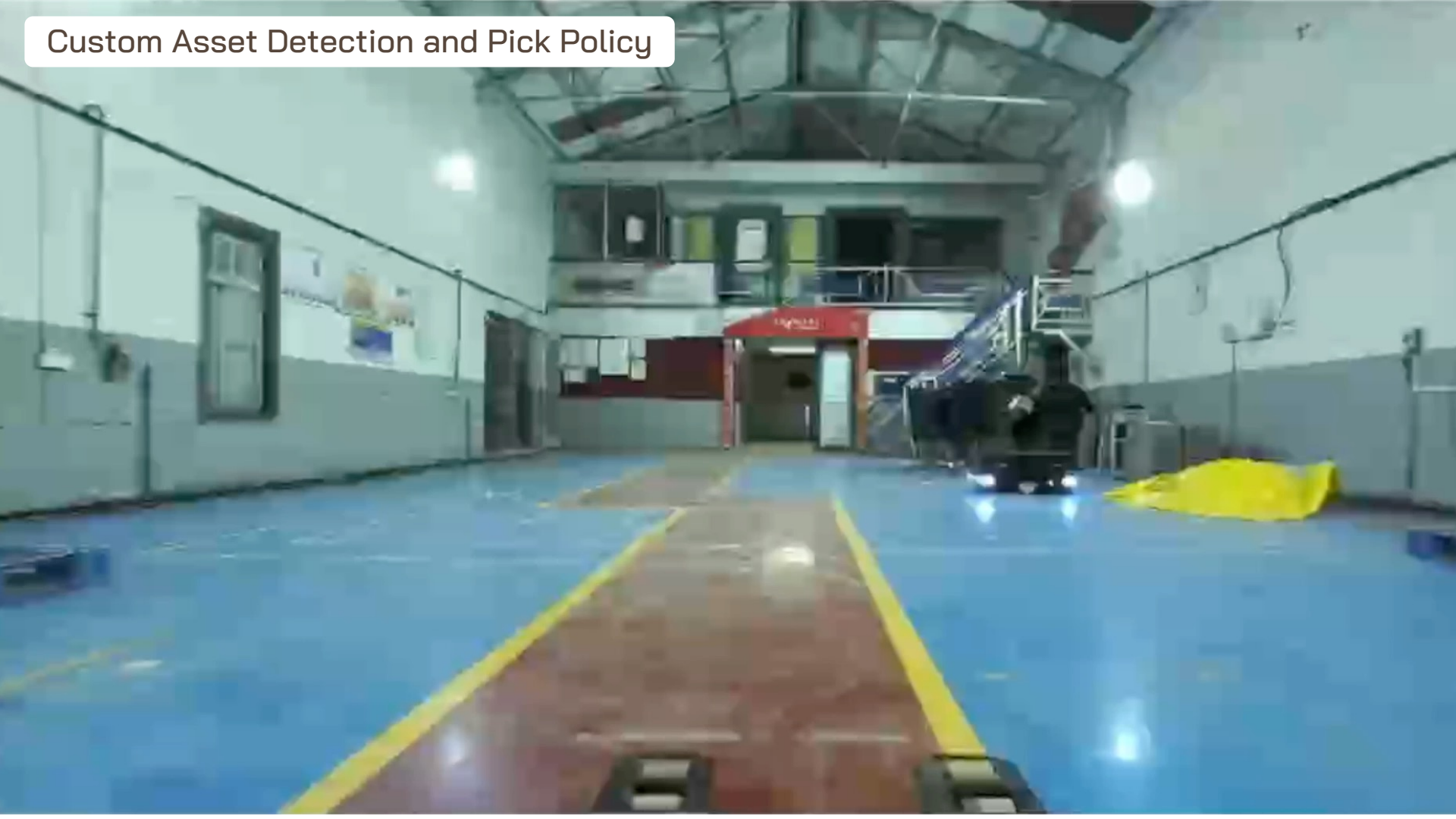
Our Vision

To be the leading provider of solutions in the field of automation, robotics, and artificial intelligence.

Our Core Purpose

To be the leading provider of solutions in the field of automation, robotics, and artificial intelligence.

Custom Asset Detection and Pick Policy



Specifications



General

Product Design life Five years or 2000 Battery cycles whichever earlier

Dimensions

L*W*H 1000*810*2000 mm (40*32*80 inches)

Ground Clearance 20 mm

Weight (w/o payload) 180 kg

Payload

Payload up to 1400kg (3000lbs)

Speed & Performance

Max Speed (with full Load) 1.8 m/sec (4 mph)

Max Acceleration (with full Load) 0.3 m/sec²

Active Operation time with payload **Up to 8hrs**

Power

Battery type Li-ion 48VDC, 75Ah

Charging time **1.5 hours**

Autonomous charging Optional - Docking charging station

Environment

Operating temperature range +5°C to +45°C

Narrow Aisle support **up to 1.2m (4 feet)**

Inclination max 3 Degrees

Floor conditions max step 15mm; max gap 15mm

Compliance

Designed to meet Safety Standard for Industrial Vehicles **ISO 3691-4, ISO 10218, ANSI 15.08**

Communication

WiFi 802.11ax Dual-band a/b/g/n/ac

Ethernet Gigabit Ethernet

USB USB 3.0 via. Type C

Sensor, & Safety

Safety Laser Sensor & Range 1Pcs - Lidars (PID2 Cat3)

Camera Module 4Pcs – at 2m height ; 1 Front bottom and 1 Back Bottom

Thank You

WEBSITE
EMAIL
CONTACT

www.peerrobotics.ai
rishabh@peerrobotics.ai
+1 (860) 221-5637

